

# Christian Roth

F/W 2018 Catalog



Sun Collection

# Dreesen



CRS013-56-01

Frame : Black  
Lens : Grey



CRS013-56-02

Frame : Crystal Rose  
Lens : Light Grey



CRS013-56-03

Frame : Matte Frost  
Lens : Grey - Milky Gold Flash



## Details

- Beveled acetate frame
- Custom wire core
- Laser etched logo on temple tips
- 100% UVA and UVB protection lenses
- Available in Asian Fit
- Made in Japan

Temple Length - 145 mm  
Lens Width - 56 mm  
Nose Bridge Length - 18 mm

# Archive 1993 (6558)



CRS-00050

Frame : Matte White  
Lens : Grey - Silver Mirror



CRS-00051

Frame : Matte Nude  
Lens : Rose Gradient



CRS-00052 (Limited Edition)

Frame : Murano  
Lens : Grey



CRS-00053

Frame : Black  
Lens : Grey



## Details

- Custom hinge mechanism
- CNC machined front frame reverse concave surface
- Rugged 5 barrel hinge.
- Custom cut and paste inserts on temple tips
- 100% UVA and UVB protection lenses
- Available in Asian Fit
- Made in Italy

Temple Length - 140 mm  
Lens Width - 57 mm  
Nose Bridge Length - 19 mm

# Firi



CRS002-53-01

Frame : Black

Lens : Grey to Clear



CRS002-53-02

Frame : Tortoise

Lens : Ocean Blue to Clear



CRS002-53-03

Frame : Matte Nude

Lens : Brown to Light Brown



## Details

- Ultra beveled frame
- Laser etched logo temple tips
- 100% UVA and UVB protection lenses
- Available in Asian Fit
- Made in Italy

Temple Length - 145 mm  
 Lens Width - 53 mm  
 Nose Bridge Length - 17 mm

# Nu-Type



CRS009-49-01

Frame : Gold

Lens : Ocean Blue



CRS009-49-02

Frame : Rose Gold

Lens : Grey



CRS009-49-03

Frame : Matte Black

Lens : Amber



## Details

- Titanium brow bar detail
- Double bevel titanium temple
- Adjustable titanium nose pads
- Laser etched logo on temple tips
- 100% UVA and UVB protection lenses
- Made in Japan

Temple Length - 146 mm  
 Lens Width - 49 mm  
 Nose Bridge Length - 21 mm

# Oskari



## CRSO08-49-01

Frame : Black - Matte Black

Lens : Grey to Clear



## CRSO08-49-02

Frame : Brown Smoke - White Gold

Lens : Light Brown



## CRSO08-49-03

Frame : Light Grey Crystal - Rose Gold

Lens : Light Grey



### Details

- Single titanium brow bridge
- Double bevel titanium temple
- Laser etched logo on temple tips
- 100% UVA and UVB protection lenses
- Available in Asian Fit
- Made in Japan

Temple Length - 145 mm  
 Lens Width - 49 mm  
 Nose Bridge Length - 24 mm

# Rizzei



## CRSO05-51-01

Frame : Yellow Gold

Lens : Brown to Light Brown



## CRSO05-51-02

Frame : Rose Gold

Lens : Rose - Silver Flash



## CRSO05-51-03

Frame : Silver

Lens : Grey to Aqua Marine



### Details

- Metal frame with acetate lens inserts
- Adjustable titanium nose pads
- Laser etched logo temple tips
- 100% UVA and UVB protection lenses
- Made in Italy

Temple Length - 142 mm  
 Lens Width - 51 mm  
 Nose Bridge Length - 21 mm

# Vinz



## CRS006-50-01

Frame : Tortoise - Gold  
Lens : G-15



## CRS006-50-02

Frame : Black - Silver  
Lens : Grey to Light Grey



## CRS006-50-03

Frame : Blue - Gunmetal  
Lens : Grey to Aqua Marine



### Details

- Single brow bridge with metal insert detail
- Metal temples with acetate tips
- Laser etched logo temple tips
- 100% UVA and UVB protection lenses
- Made in Italy

Temple Length - 142 mm  
Lens Width - 50 mm  
Nose Bridge Length - 20 mm

# Armer



## CRS-00088

Frame : Black - Matte Black  
Lens : Matte Grey



## CRS-00089

Frame : Crystal Clear - Silver  
Lens : Grey to Clear



## CRS-00090

Frame : Grey  
Lens : Brown to Clear



### Details

- Flat graphic frame front
- Precision CNC front frame
- Custom lightweight metal temple
- Custom integrated hinge
- 100% UVA and UVB protection lenses
- Available in Asian Fit
- Made in Italy

Temple Length - 145 mm  
Lens Width - 61 mm  
Nose Bridge Length - 16 mm

# Rina



## CRS010-61-01

Frame : Black - Black Rhodium  
Lens : Grey



## CRS010-61-02

Frame : Amber Smoke - White Gold  
Lens : Light Brown



## CRS010-61-03

Frame : Crystal Rose - Rose Gold  
Lens : Rose - Silver Flash



### Details

- Beveled acetate frame
- Double bevel titanium temple
- Laser etched logo temple tips
- Available in Asian Fit
- 100% UVA and UVB protection lenses
- Made in Japan

Temple Length - 146 mm  
Lens Width - 61 mm  
Nose Bridge Length - 11mm

# Rock 'N Roth



## CRS-00007

Frame : Black - Ivory - Vintage Amber  
Lens : Brown to Light Brown



## CRS-00008

Frame : Blue Glitter - Crystal Brown - Animal  
Lens : Brown to Turquoise



## CRS-00009

Frame : Brown Glitter - Ivory - Pink Glitter  
Lens : Brown - Bronze Mirror



### Details

- Multiple laminated Italian acetate frame material
- Custom metal temple
- Acetate temple tips
- 100% UVA and UVB protection lenses
- Available in Asian Fit
- Made in Italy

Temple Length - 138 mm  
Lens Width - 54 mm  
Nose Bridge Length - 16mm

# Round-Wav



## CRS012-50-01

Frame : Grey Smoke - Light Grey Crystal

Lens : Grey



## CRS012-50-02

Frame : Amber Smoke - Brown Crystal

Lens : Light Brown



## CRS012-50-03

Frame : Crystal Rose

Lens : Light Grey



### Details

- Beveled acetate frame
- Cut-and-paste detail
- Custom wire core
- 100% UVA and UVB protection lenses
- Available in Asian Fit
- Made in Japan

Temple Length - 145 mm  
Lens Width - 50 mm  
Nose Bridge Length - 20 mm

# Sqr-Wav



## CRS011-53-01

Frame : Black - Dark Grey Crystal

Lens : Grey



## CRS011-53-02

Frame : Grey Smoke - Light Grey Crystal

Lens : Light Grey



## CRS011-53-03

Frame : Brown Smoke - Brown Crystal

Lens : Light Brown



### Details

- Beveled acetate frame
- Cut-and-paste detail
- Custom wire core
- 100% UVA and UVB protection lenses
- Made in Japan

Temple Length - 145 mm  
Lens Width - 53 mm  
Nose Bridge Length - 17 mm



# Reducer



CRS-00067

Frame : Gunmetal

Lens : Grey - Black Flash



CRS-00068

Frame : Gold

Lens : Brown - Gold Flash



CRS-00069

Frame : Silver

Lens : Grey - Silver Mirror



## Details

- O-Base floating lens construction
- Custom metal temple
- Metal brow bar with integrated rim lock
- 100% UVA and UVB protection lenses
- Made in Italy

Temple Length - 138 mm  
Lens Width - 55 mm  
Nose Bridge Length - 17 mm

# 5USW



CRS-00028

Frame : Gunmetal

Lens : Grey to Light Grey



CRS-00029

Frame : Gold

Lens : Brown to Light Brown



CRS-00030

Frame : Silver

Lens : Grey - Black Flash



## Details

- 4-Base floating lens construction
- Custom metal temple
- Cut-and-paste acetate temple tips
- Metal brow bar with integrated rim lock
- 100% UVA and UVB protection lenses
- Made in Italy

Temple Length - 138 mm  
Lens Width - 56 mm  
Nose Bridge Length - 18 mm

# Kardo



## CRS-00100

Frame : Gold Mirror - Gold  
 Lens : Brown to Clear



## CRS-00102

Frame : Chrome Mirror - Silver  
 Lens : Grey - Black Flash



## CRS-00101

Frame : Crystal Clear - Silver  
 Lens : Grey - Black Flash



### Details

- "Lens-in-Lens" concept with 2-Base lenses
- Custom, lightweight metal temple
- Custom integrated hinge
- 100% UVA and UVB protection lenses
- Made in Italy

Temple Length - 144 mm  
 Lens Width - 53 mm  
 Nose Bridge Length - 22mm

# Archive 1993 (6558-CLR)



## CRS-00061

Frame : Gold Mirror - Gold  
 Lens : Brown to Clear



## CRS-00062

Frame : Chrome Mirror - Silver  
 Lens : Grey - Black Flash



## CRS-00063

Frame : Crystal Clear - Silver  
 Lens : Grey - Silver Mirror



### Details

- "Lens in Lens" concept featuring O base lenses
- Custom hinge mechanism
- Custom, lightweight metal temple
- 100% UVA and UVB protection lenses
- Made in Italy

Temple Length - 144 mm  
 Lens Width - 57 mm  
 Nose Bridge Length - 19 mm

# Evala



## CRS-00064

Frame : Silver - Silver Mirror  
 Lens : Grey - Silver Mirror



## CRS-00065

Frame : Gold - Brown  
 Lens : Matte Gold



## CRS-00066

Frame : Silver - Blue  
 Lens : Grey - Silver Mirror



### Details

- "Lens in Lens" concept with 2-Base lenses
- Metal outer frame/bridge
- Custom, lightweight metal temple
- Custom integrated hinge
- 100% UVA and UVB protection lenses
- Made in Italy

Temple Length - 144 mm  
 Lens Width - 52 mm  
 Nose Bridge Length - 23 mm

# Ventriloquist



## CRS-00058

Frame : Black Flash - Gunmetal  
 Lens : Grey - Black Flash



## CRS-00059

Frame : Chrome Mirror - Silver  
 Lens : Rose to Clear



## CRS-00060

Frame : Gold Mirror - Gold  
 Lens : Brown to Light Brown



### Details

- "Lens in Lens" concept featuring 0 base lens inserts embedded within a 2 base shield
- Custom milled metal inlay set in front frame
- Custom hinge mechanism
- Custom, lightweight metal temple
- 100% UVA and UVB protection lenses
- Made in Italy

Temple Length - 144 mm  
 Lens Width - 63 mm  
 Nose Bridge Length - 6 mm

# Funker



CRS000-127

Frame : White Gold

Lens : Brown to Light Brown



CRS000-128

Frame : Rose Gold

Lens : Grey to Light Grey



CRS000-129

Frame : Silver

Lens : Grey to Yellow



## Details

- Bridge lens with laser etched logo detail
- Adjustable titanium nose pads
- Laser etched logo temple tips
- 100% UVA and UVB protection lenses
- Made in Japan

Temple Length - 150 mm  
 Lens Width - 60 mm  
 Nose Bridge Length - 13 mm

# Tripale



CRS-00094

Frame : Black - Gold

Lens : Grey to Clear



CRS-00095

Frame : Tortoise - Silver

Lens : Brown to Clear



CRS-00096

Frame : Matte Pink - Gold

Lens : Grey to Clear



## Details

- Flat graphic frame front
- Custom, lightweight metal temple
- Custom integrated hinge
- 100% UVA and UVB Protection Lens
- Made in Italy

Temple Length - 145 mm  
 Lens Width - 66 mm  
 Nose Bridge Length - 13 mm

# Linan



CRS-00076  
Frame : Black  
Lens : Grey



CRS-00077  
Frame : Tortoise  
Lens : Matte Grey



CRS-00078  
Frame : Crystal Clear  
Lens : Grey - Pink Flash



## Details

- Flat graphic frame front
- Precision CNC front frame
- Italian acetate frame
- Rugged 5-barrel hinge
- Custom thermo-formed temple structure
- 100% UVA and UVB protection lenses
- Available in Asian Fit
- Made in Italy

Temple Length - 140 mm  
Lens Width - 57 mm  
Nose Bridge Length - 14 mm

# Textuelle



CRS-00082  
Frame : Black  
Lens : Grey



CRS-00083  
Frame : Tortoise  
Lens : Brown to Clear



CRS-00084  
Frame : Crystal Clear  
Lens : Grey Pink Flash



## Details

- Flat graphic frame front
- Precision CNC front frame
- Custom lightweight metal temple
- Custom integrated hinge
- 100% UVA and UVB protection lenses
- Available in Asian Fit
- Made in Italy

Temple Length - 145 mm  
Lens Width - 61 mm  
Nose Bridge Length - 16 mm

# Cekto



**CRS004-59-01**

Frame : Black  
Lens : Light Grey



**CRS004-59-02**

Frame : Matte Nude - Crystal Clear  
Lens : Brown to Light Brown



**CRS004-59-03**

Frame : Tortoise - Green Crystal  
Lens : Light Brown



## Details

- Step cut acetate frame
- Metal temples with acetate tips
- Laser etched logo temple tips
- 100% UVA and UVB protection lenses
- Available in Asian Fit
- Made in Italy

Temple Length - 146 mm  
Lens Width - 59 mm  
Nose Bridge Length - 15 mm

# Droner



**CRS003-53-01**

Frame : Black  
Lens : Grey



**CRS003-53-02**

Frame : Tortoise  
Lens : Ocean Blue to Clear



**CRS003-53-03**

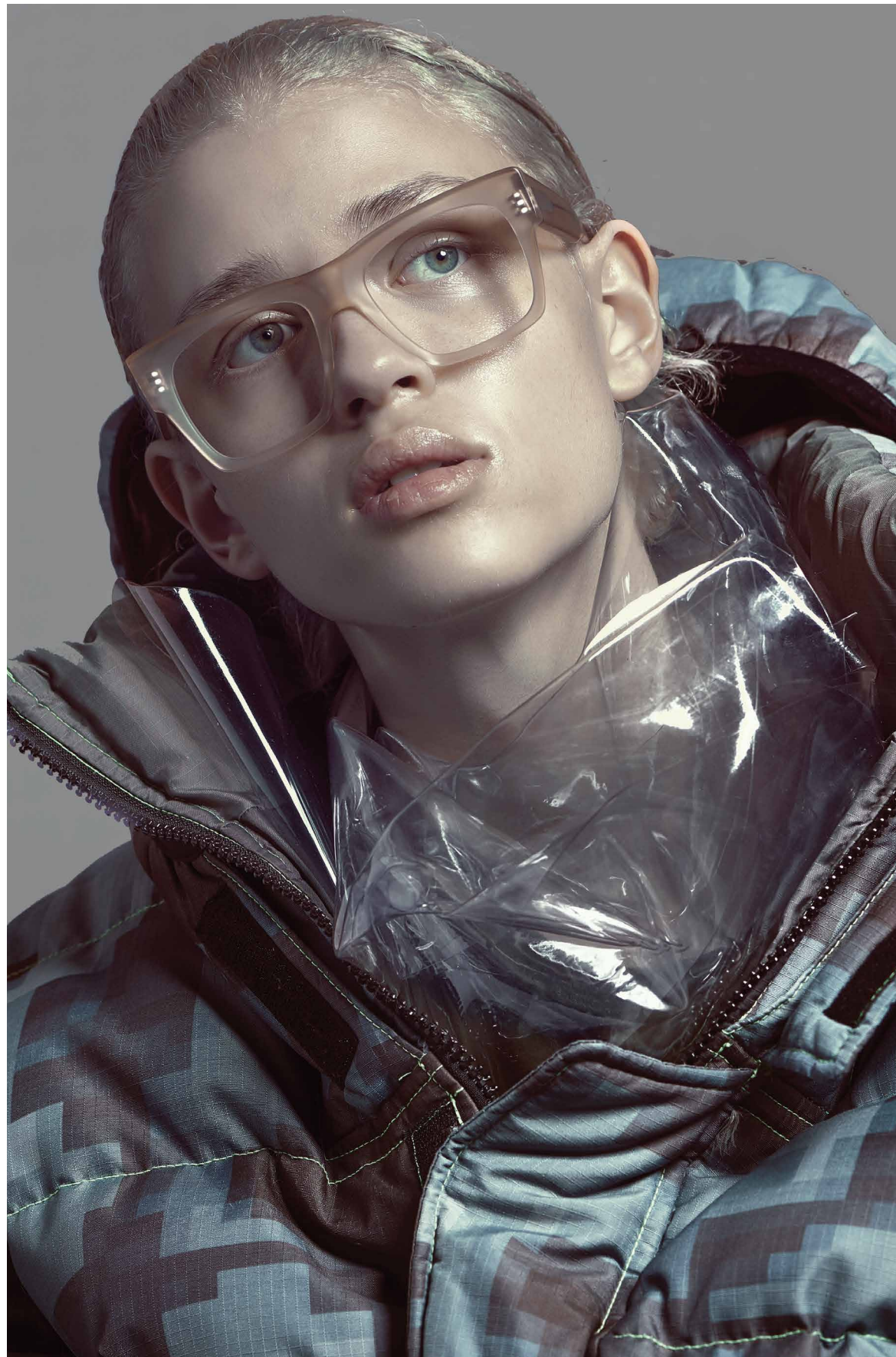
Frame : Matte Nude Crystal  
Lens : Grey to Clear



## Details

- Ultra beveled frame
- Precision CNC front frame
- Laser etched logo temple tips
- 100% UVA and UVB protection lenses
- Available in Asian Fit
- Made in Italy

Temple Length - 145 mm  
Lens Width - 53 mm  
Nose Bridge Length - 20 mm



Optical Collection

# Nu-Type



CRX009-49-01

Frame : Gold



CRX009-49-02

Frame : Rose Gold



CRX009-49-03

Frame : Matte Black



## Details

- Titanium brow bar detail
- Double bevel temple tip
- Adjustable titanium nose pads
- Laser etched logo temple tips
- Made in Japan

Temple Length - 146 mm  
Lens Width - 49 mm  
Nose Bridge Length - 21 mm

# Reducer



CRX001-55-01

Frame : Yellow Gold



CRX001-55-02

Frame : Rose Gold



CRX001-55-03

Frame : Silver



## Details

- Single brow bridge
- Adjustable titanium nose pads
- Laser etched logo temple tips
- Made in Italy

Temple Length - 140 mm  
Lens Width - 55 mm  
Nose Bridge Length - 17 mm



# 5USW



CRX-00025

Frame : Gunmetal



CRX-00026

Frame : Gold



CRX-00027

Frame : Silver



## Details

- 4-Base floating lens construction
- Custom metal temple
- Cut-and-paste acetate temple tips
- Metal brow bar with integrated rim lock
- Made in Italy

Temple Length - 138 mm  
Lens Width - 56 mm  
Nose Bridge Length - 18 mm

# Rina



CRX010-61-01

Frame : Black - Black Rhodium



CRX010-61-02

Frame : Amber Smoke - White Gold



CRX010-61-03

Frame : Crystal Rose - Rose Gold



## Details

- Beveled acetate frame
- Double bevel titanium temple
- Laser etched logo temple tips
- Also Available in Asian Fit
- Made in Japan

Temple Length - 146 mm  
Lens Width - 61 mm  
Nose Bridge Length - 11 mm

# Textuelle



CRX-00046  
Frame : Black



CRS-00047  
Frame : Tortoise



CRS-00048  
Frame : Crystal Clear



## Details

- Flat graphic frame front
- Precision CNC front frame
- Custom lightweight metal temple
- Custom integrated hinge
- Available in Asian Fit
- Made in Italy

Temple Length - 145 mm  
Lens Width - 61 mm  
Nose Bridge Length - 16 mm

# Linan



CRX-00040  
Frame : Black



CRX-00041  
Frame : Tortoise



CRX-00042  
Frame : Crystal Clear



## Details

- Flat graphic frame front
- Precision CNC front frame
- Italian acetate frame
- Rugged 5-barrel hinge
- Custom thermo-formed temple structure
- Available in Asian Fit
- Made in Italy

Temple Length - 140 mm  
Lens Width - 57 mm  
Nose Bridge Length - 14 mm

# Round-Wav



CRX012-50-01

Frame : Grey Smoke - Light Grey crystal



CRX012-50-02

Frame : Amber Smoke - Brown Crystal



CRX012-50-03

Frame : Crystal Rose



## Details

- Beveled acetate frame
- Cut-and-paste detail
- Custom wire core
- Laser etched logo on temple tips
- Available in Asian Fit
- Made in Japan

Temple Length - 145 mm  
Lens Width - 50 mm  
Nose Bridge Length - 20 mm

# Sqr-Wav



CRX011-53-01

Frame : Black - Dark Grey Crystal



CRX011-53-02

Frame : Grey Smoke - Light Grey Crystal



CRX011-53-03

Frame : Brown Smoke - Brown Crystal



## Details

- Beveled acetate frame
- Cut-and-paste detail
- Custom wire core
- Laser etched logo on temple tips
- Available in Asian Fit
- Made in Japan

Temple Length - 145 mm  
Lens Width - 53 mm  
Nose Bridge Length - 17 mm

# Kiss Me Kate



CRX-00001

Frame : Black - Crystal Clear



CRX-00002

Frame : Vintage Amber - Crystal Brown



CRX-00003

Frame : Brown Glitter - Ivory



## Details

- Multiple acetate frame material
- Custom enamel filled Christian Roth logo plaque
- Available in Asian Fit
- Made in Italy

Temple Length - 140 mm  
Lens Width - 55 mm  
Nose Bridge Length - 17 mm

# Firi



CRX002-53-01

Frame : Black



CRX002-53-02

Frame : Tortoise



CRX002-53-03

Frame : Matte Nude



## Details

- Ultra beveled frame
- Laser etched logo temple tips
- Available in Asian Fit
- Made in Italy

Temple Length - 145 mm  
Lens Width - 53 mm  
Nose Bridge Length - 17 mm

# Jae



CRX-00028

Frame : Matte Plum - Matte Pink



CRX-00029

Frame : Matte Black - Matte Crystal Grey



CRX-00030

Frame : Black - Tortoise



## Details

- Precision machined acetate front frame with cut and paste construction
- Rugged 5 Barrel hinge
- Custom cut and paste inserts on temple tips
- Available in Asian Fit
- Made in Italy

Temple Length - 140 mm  
Lens Width - 51 mm  
Nose Bridge Length - 19 mm

# Goa



CRX-00034

Frame : Pink - White - Gold



CRX-00035

Frame : Pacific Blue - Tortoise - Gold



CRX-00036

Frame : Black - Gunmetal



## Details

- Precision machined acetate front frame with cut and paste construction
- Custom metal temple
- Custom cut and paste inserts on temple tips
- Available in Asian Fit
- Made in Italy

Temple Length - 138 mm  
Lens Width - 48 mm  
Nose Bridge Length - 23 mm

# Droner



CRX003-53-01

Frame : Black



CRX003-53-02

Frame : Tortoise



CRX003-53-03

Frame : Matte Nude Crystal



## Details

- Ultra beveled frame
- Laser etched logo temple tips
- Available in Asian Fit
- Made in Italy

Temple Length - 145 mm  
Lens Width - 53 mm  
Nose Bridge Length - 20 mm

